

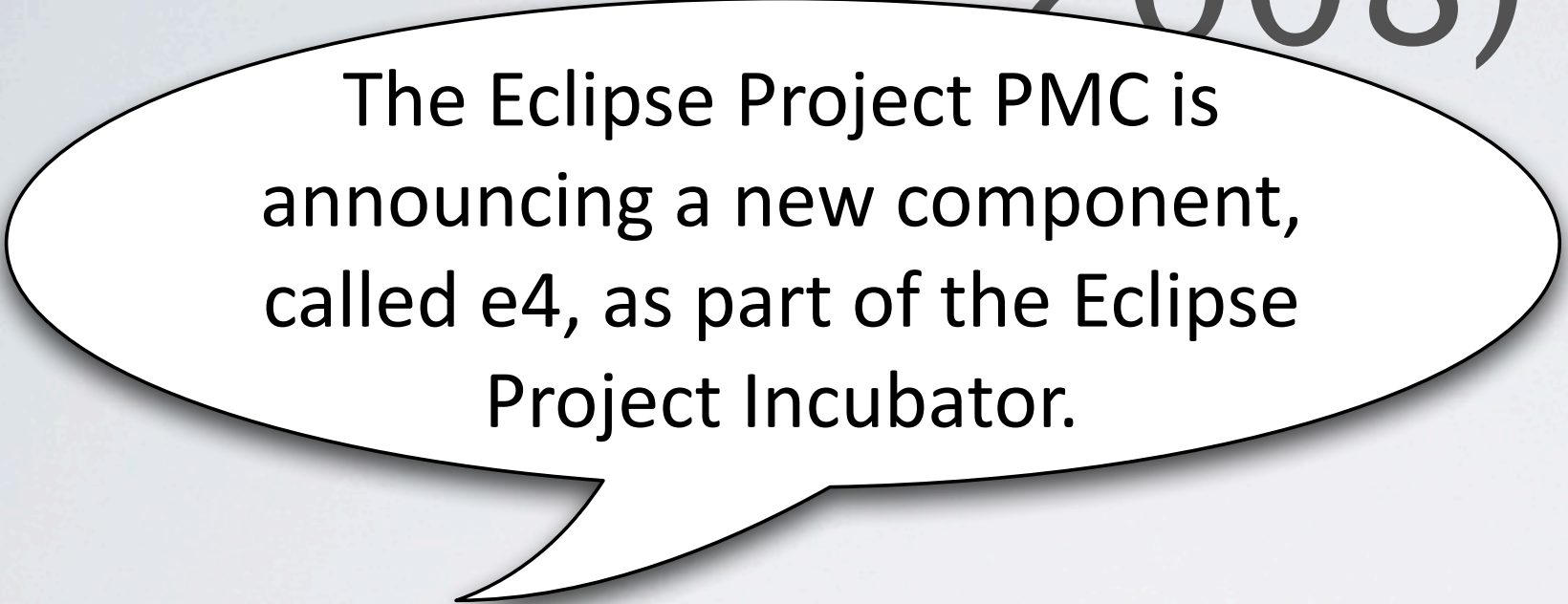
The Way to Eclipse 4.0 and 4.1

Tom Schindl – tom.schindl@bestsolution.at

Boris Bokowski – Boris_Bokowski@ca.ibm.com

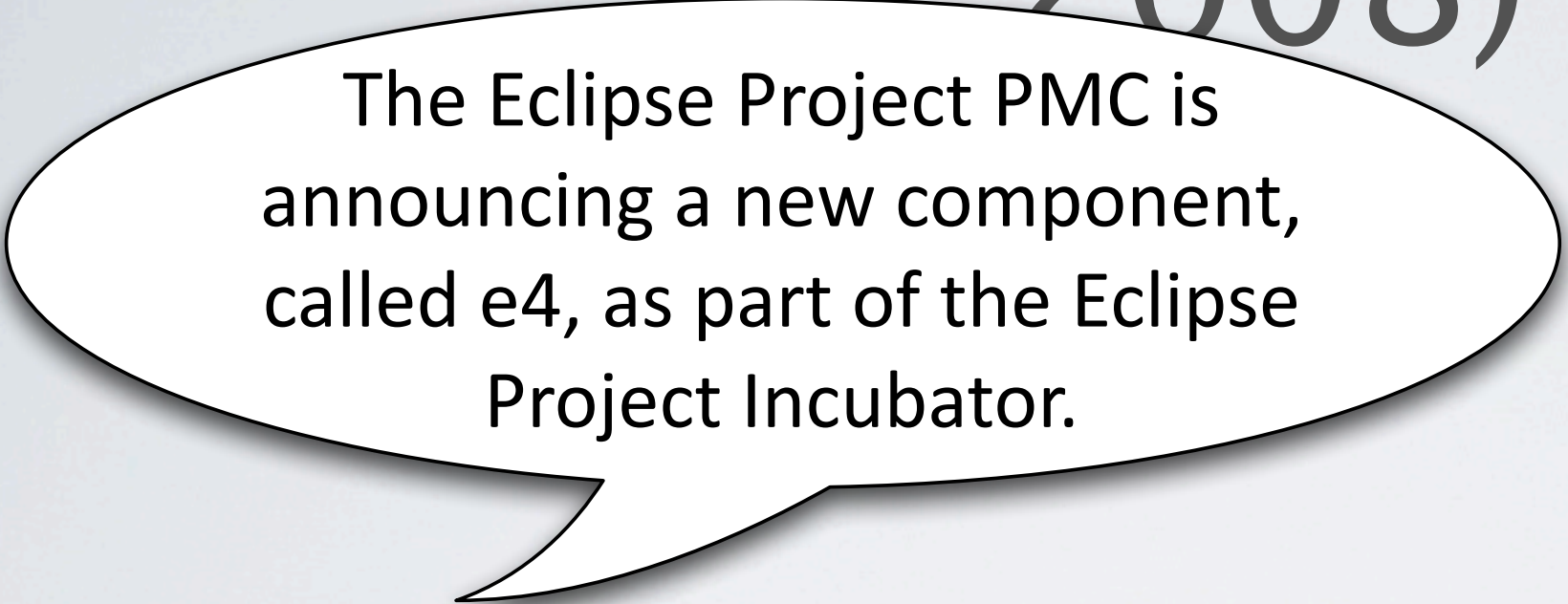
How it all began (March 5, 2008)

How it all began (March 5, 2008)



The Eclipse Project PMC is
announcing a new component,
called e4, as part of the Eclipse
Project Incubator.

How it all began (March 5, 2008)



The Eclipse Project PMC is
announcing a new component,
called e4, as part of the Eclipse
Project Incubator.

Steve &
Boris, late in
the evening

How it all began (March 5, 2008)

The Eclipse Project PMC is announcing a new component, called e4, as part of the Eclipse Project Incubator.

Steve &
Boris, late in
the evening

At the risk of starting a fight, is anyone else bothered by the fact that this initial committer list is composed almost exclusively of IBM engineers?

How it all began (March 5, 2008)

The Eclipse Project PMC is announcing a new component, called e4, as part of the Eclipse Project Incubator.

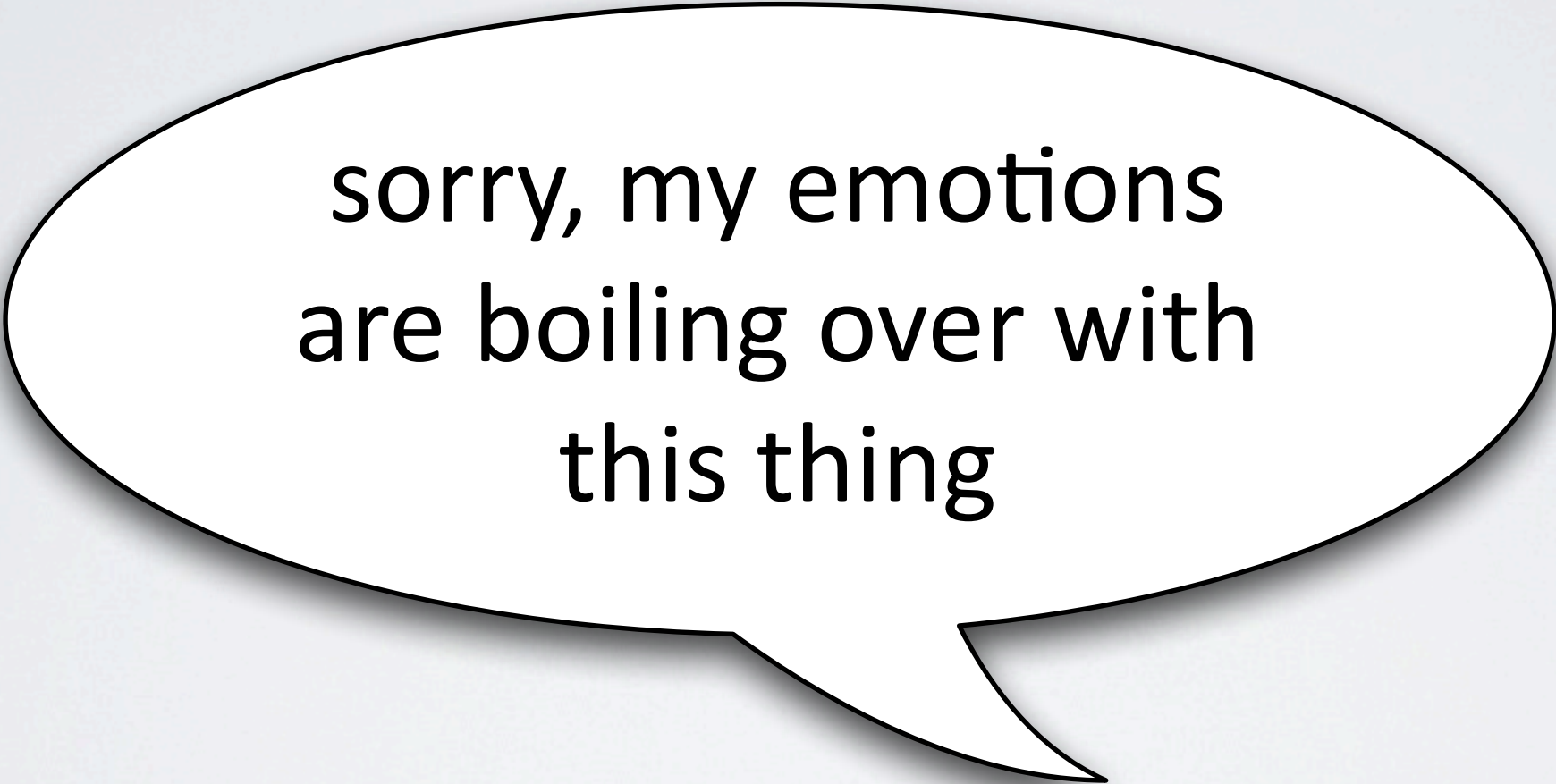
Steve &
Boris, late in
the evening

At the risk of starting a fight, is anyone else bothered by the fact that this initial committer list is composed almost exclusively of IBM engineers?

Doug G.

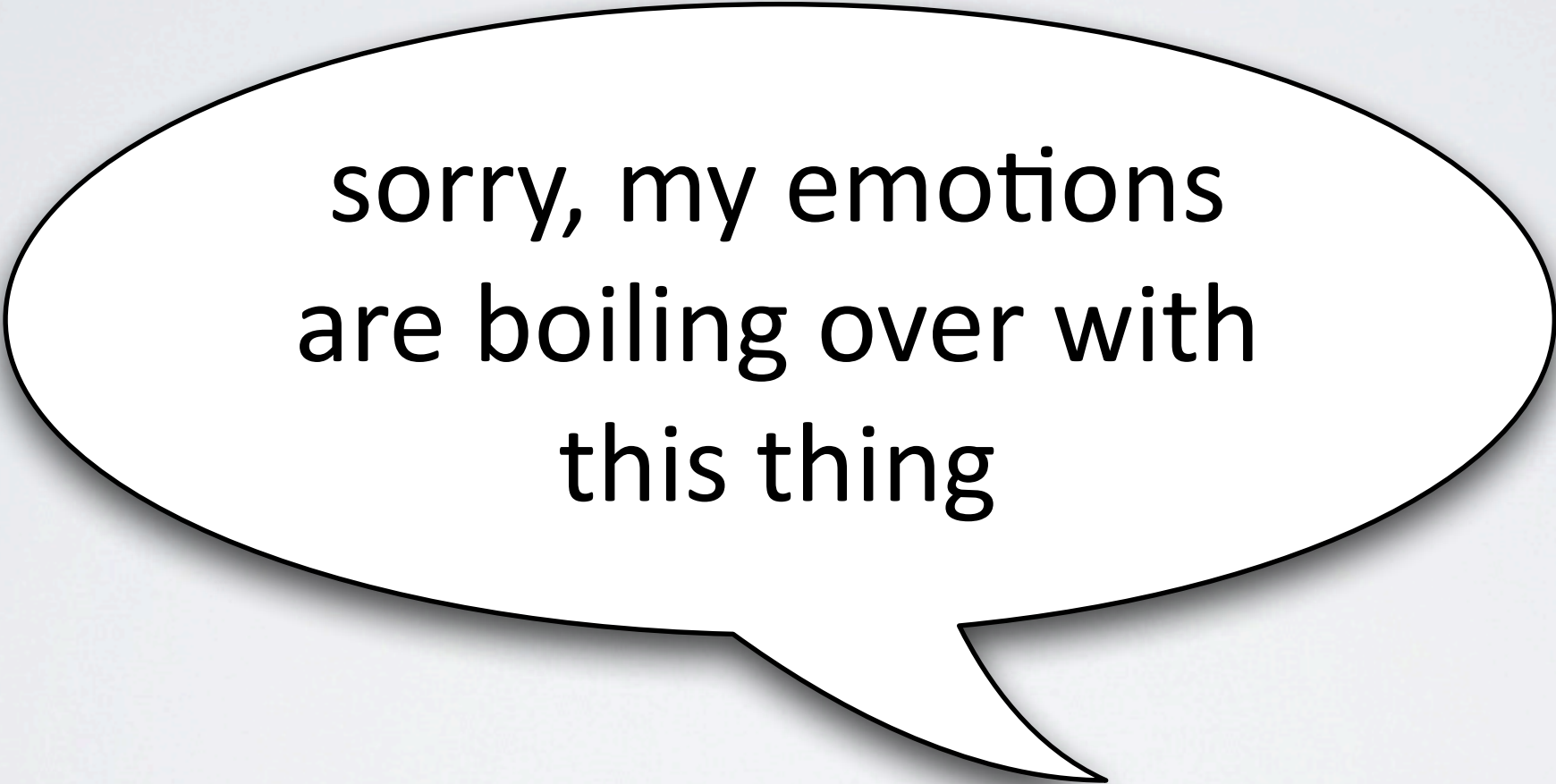
20+ emails and blogs
later...

20+ emails and blogs later...



sorry, my emotions
are boiling over with
this thing

20+ emails and blogs later...



sorry, my emotions
are boiling over with
this thing

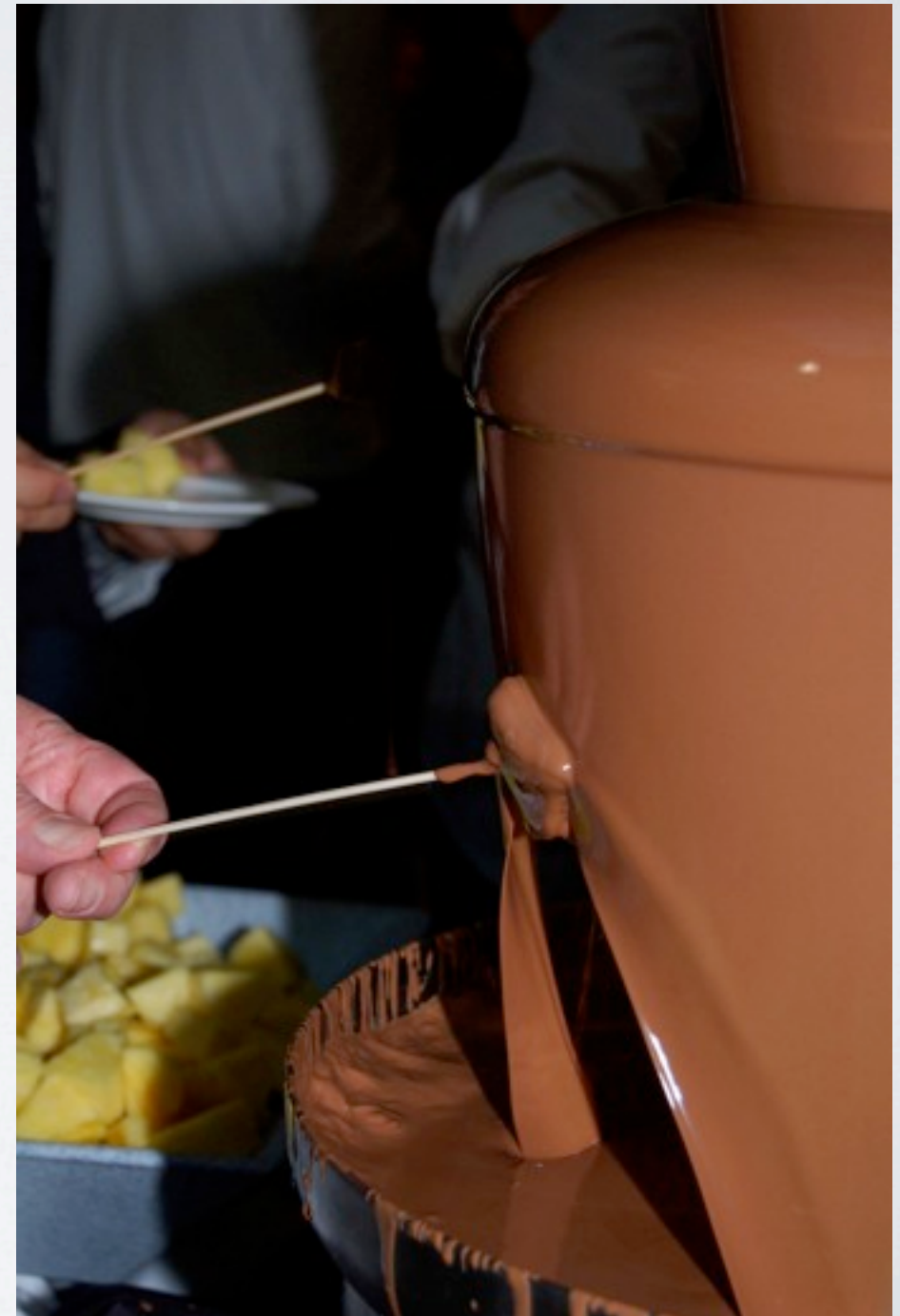
Doug S.

EclipseCon, March 18 2008

- SWT Browser Edition
- Eclipse IDE in a Browser
- Separation of WB Model and View
- Scripting

EclipseCon, March 18 2008

- SWT Browser Edition
- Eclipse IDE in a Browser
- Separation of WB Model and View
- Scripting



e4 Summit, May 22, 2008

- 32 Participants from 10+ Companies
- new: WB Model EMF based
- Dependency Injection
- Flexible Resources



e4 Summit, May 22, 2008

- 32 Participants from 10+ Companies
- new: WB Model EMF based
- Dependency Injection
- Flexible Resources

surrounded
by Germans!



e4 Summit, May 22, 2008

- 32 Participants from 10+ Companies
- new: WB Model EMF based
- Dependency Injection
- Flexible Resources

surrounded
by Germans!

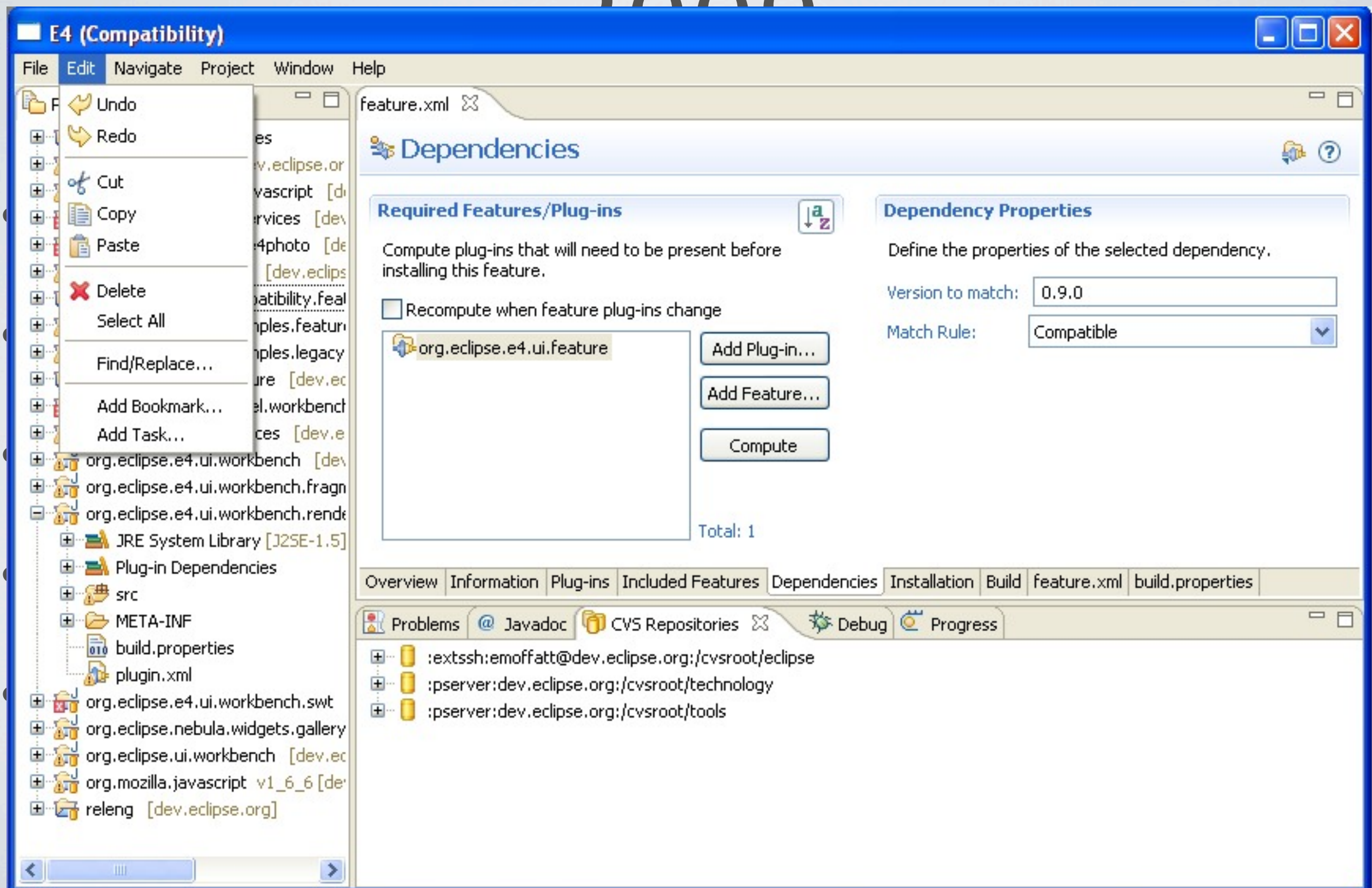
Wayne B.



Goals

- Make it easier to develop Eclipse-based plug-ins and apps
- More control over look & feel
- Better maintainable code base for Eclipse Workbench
- Revitalize Eclipse Platform

e4 0.9 Release, Summer 2000



e4 0.9 Release, Summer 2009

- Complete Proof of Concept Implementation
- Programming Model (DI, Services)
- Models, Renderers, CSS
- Compatibility Layer
- ... but it was not quite right, and we didn't self-host

e4 0.9 Release, Summer 2009

- Complete Proof of Concept Implementation
- Programming Model (DI, Services)
- Models, Renderers, CSS
- Compatibility Layer
- ... but it was not quite right, and we didn't self-host

Meanwhile...

- XWT made progress, lots of discussions around XWT and TM
- Flexible Resources work went into 3.x stream
- New People and Ideas showed up: REST-based Resources, more recently: Deep linking

SWT Browser Edition

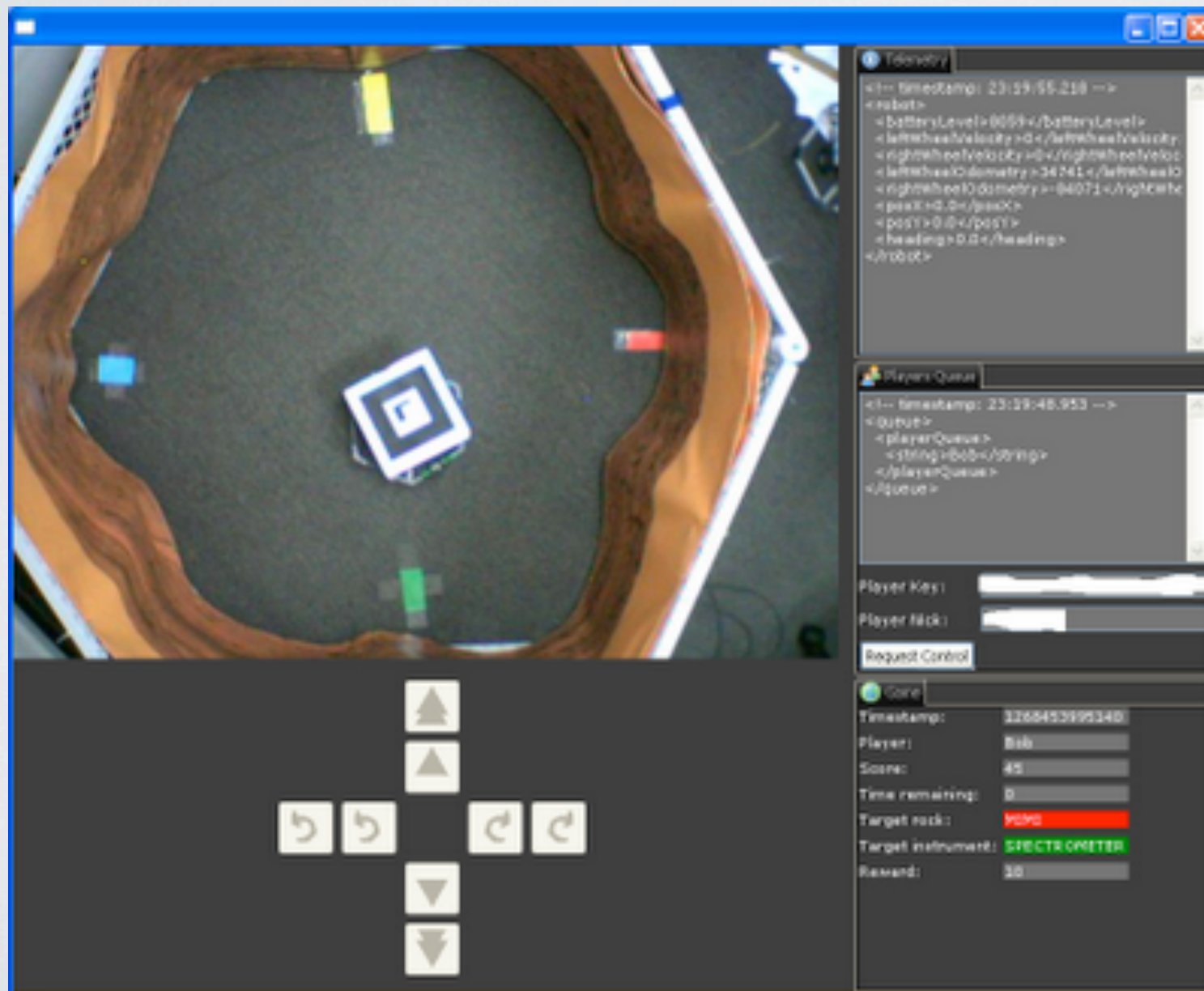
- Technology worked really well
- But not applicable without rewriting Java
- We'd rather rewrite with HTML5, JavaScript, CSS

SWT Browser Edition

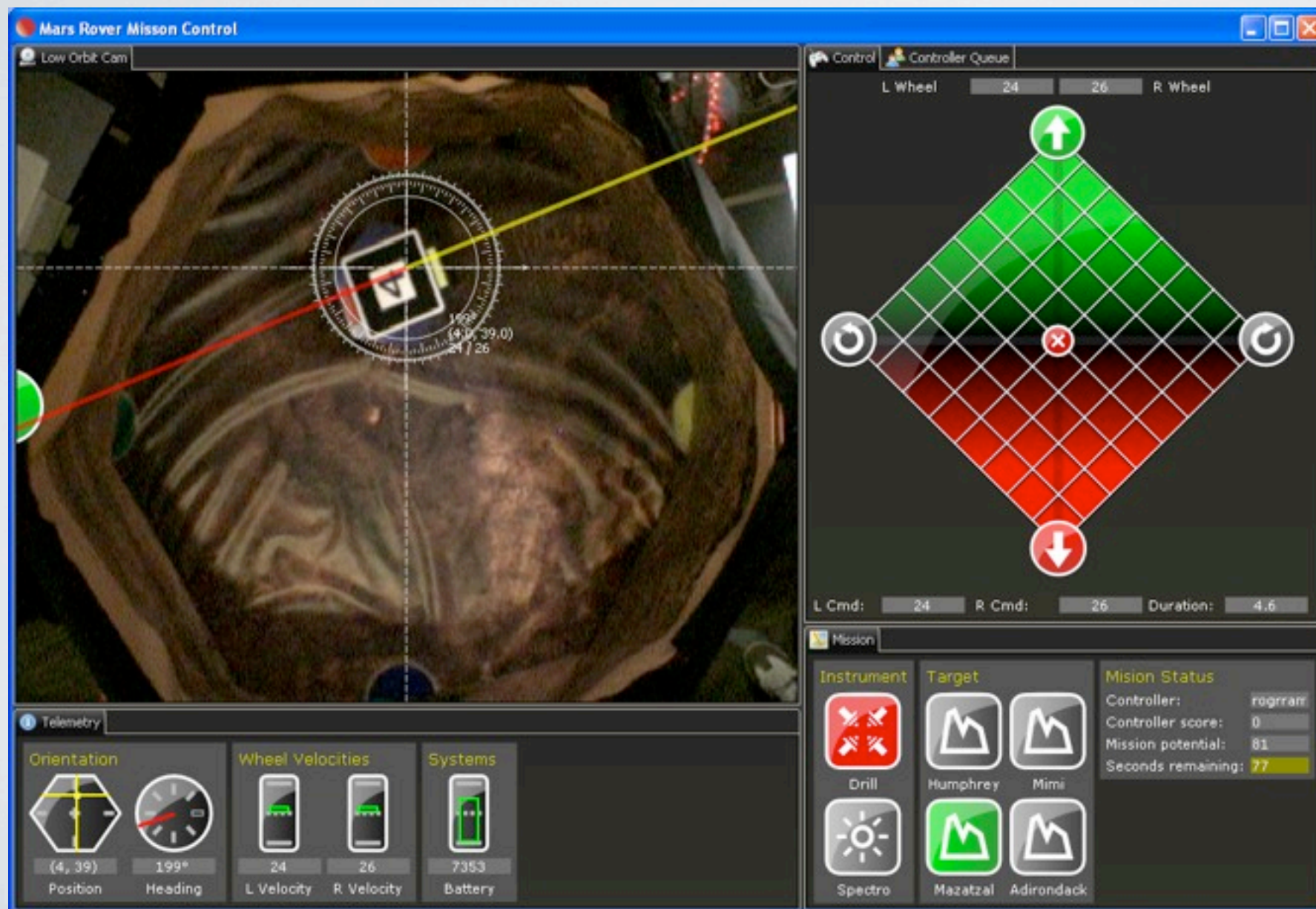
- Technology worked really well
- But not applicable without rewriting Java
- We'd rather rewrite with HTML5, JavaScript, CSS



EclipseCon 2010



EclipseCon 2010



Eclipse SDK 4.0 (Early Adopter)

- Released in July 2010
- This time, for real, with self-hosting
- Realized that downstream projects and products need time to adopt, hence early adopter
- New Name: Eclipse 4.0 Application Platform

Eclipse 4.0 SDK Early Adopter Release

Rest of Platform:
Debug,
Text,
Team,
...

JDT:
Java Editor,
Java Debugging,
Refactoring,
...

PDE:
Manifest Editor,
Launching,
API Tooling,
...

Workbench (Compatibility, provides 3.x APIs)

Eclipse 4 Application Platform

Modeled UI, CSS styling, Dependency Injection, Application Services

Equinox



EMF Core



SWT, JFace



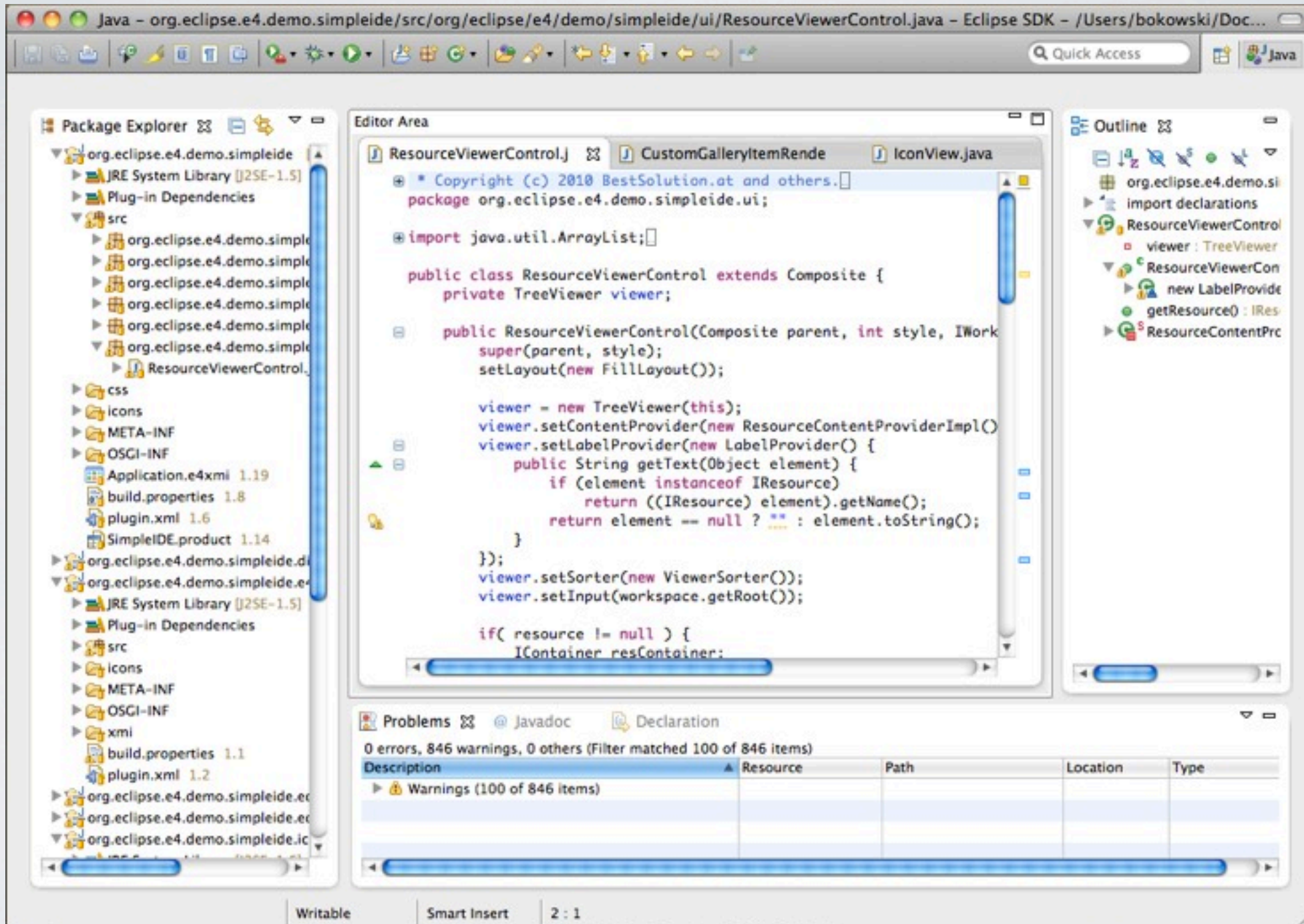
Java Virtual Machine

OS (Windows, Mac, Linux)

Main differences to 3.x

- Lower barrier of entry
- More gradual learning curve
- Easier to test
- Pluggable look & feel

Demo



CSS, New Look / Mixing views and editors / Live Model Editing

Future: 4.1 and beyond

- Eclipse SDK 4.1
 - All of Indigo should run well
 - Need to complete the story:
Context menus, Intro, Key bindings,
Internationalization, ...
- Eclipse 3.7 will be released at the same time

New end-user features in 4.1

- committed

- More flexible view/editor resizing
- documentation

- proposed

- Become faster than 3.x!
- Drag & drop for toolbars
- More complete search box
- Tab improvements

- deferred

- Tooling (Model, Dependency Injection)

New runtime features in 4.1

- committed

- Improvements in Dependency Injection mechanism
- Completing menu/commands work
- Internationalization of Workbench UI

- proposed

- Support for native Mac toolbar
- More flexible contributions using XPath
- forward compatibility layer

- deferred

- Authentication / authorization

e4 – the incubator project

- Ongoing development: XWT, Deep linking, REST-based resource model
- We're open for pretty much anything!
- EclipseCon 2010: e4 won the “most open project” award

Questions?